

A Broadwell dome prolongs the useful life of your synthetic turf field by protecting it from frost and ice, contaminants, and premature degradation from infill loss

FROST AND ICE

"Water within the infill may freeze... **Fibers will be brittle and more subject to damage** and the shock absorption of the surface will be reduced." (*American Sports Builders Association*)

"The first sign of frost and any weakness in the seams of a surface are exposed as the **water expands and, in effect, 'blows' open the joints.**" (*Technical Surfaces*)



Photo: Technical Surfaces



Photo: Star Advertiser

CONTAMINANTS

"Over time, contaminated material (such as leaf and tree debris, dirt, detritus and broken-down carpet fibres) **becomes embedded progressively deeper within the carpet infill.**" (*Technical Surfaces*)

"Contamination of the infill may lead to **hardening** of the playing surface, **decreased drainage** and **growth of bacteria**, moss, mold, algae, fungi, grass and weeds." (*Mondo Turf*)

INFILL LOSS

"Without infill support, the turf fibers bend over too far under traffic and then **break off prematurely.**" (*SportsTurf*)

"Infill displacement can weaken the fibres and **increase the rate at which the carpet wears**, compromising the playing characteristics and **foreshortening the life expectancy of the surface.**" (*Technical Surfaces*)



Photo: Northeast Turf Services

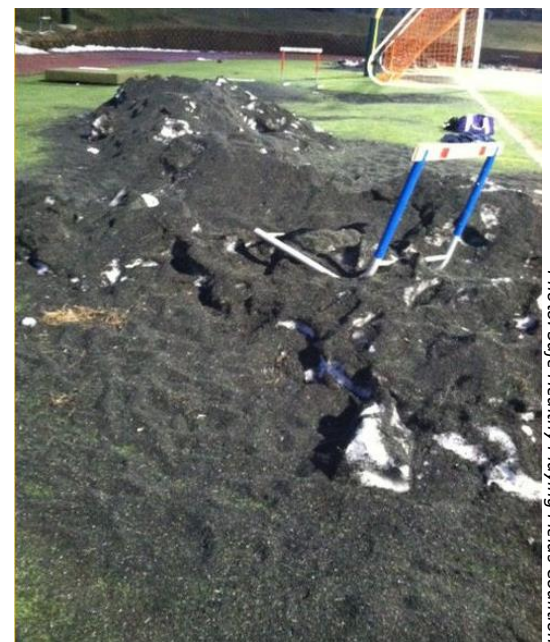


Photo: Safe Healthy Playing Fields Coalition